



Auro Technologies

Auro-Matic Pro - User Guide

Plug-in Version: 2.2.0

User Guide Version: 2.2.0

Auro Technologies NV

Kievitstraat 42

B-2400 Mol

Belgium

Phone: +32 14 31 43 43

Email: info@auro-technologies.com

Support: support@auro-technologies.com

Web: www.auro-technologies.com

Auro-Matic Pro - User Guide

Chapter 1: Using Auro-Matic Pro	5
1.1 Configuring Auro-Settings	5
1.2 Configuring a DAW Session	6
1.2.1 Configuring Playback Engine... and I/O...	6
1.3 Auro-Matic Pro 2D	7
1.3.1 Stand-alone Mode	7
1.3.2 In combination with the Auro-3D Authoring Tools	8
1.4 Auro-Matic Pro 3D	11
1.4.1 Stand-alone Mode	11
1.4.2 In combination with the Auro-3D Authoring Tools	13
1.5 Using Fader Link	17

Auro-Matic Pro - Reference Manual

Chapter 2: Introduction to Auro-3D	20
Chapter 3: System Requirements and Installation	23
3.1 System Requirements and Compatibility	23
3.2 Installation	23
3.2.1 Licensing	24
Chapter 4: Auro-Matic Pro Plug-ins	25
4.1 Auro-Matic Pro	25
4.1.1 Connection	25
4.1.2 Fader Link LED	26
4.1.3 High Latency Mode LED	26
4.1.4 HDX Aux	26

4.1.5	Name.....	26
4.1.6	Volume	26
4.1.7	Bus Assignment.....	28
4.1.8	Input Source.....	28
4.1.9	Configuration	28
4.1.10	Ambience	29
4.1.11	Strength.....	29
4.1.12	Space.....	29
4.1.13	Depth.....	29
4.1.14	Weight.....	29
4.1.15	Center	29
4.1.16	Equalizer	30
4.1.17	Controls and Settings Tabs	31
4.2	Auro-Return.....	33
4.2.1	Connection	33
4.2.2	Name.....	33
4.2.3	Bus.....	34
4.2.4	Stem.....	34
4.2.5	Output.....	34
4.2.6	Preset.....	34
4.2.7	1...N	34
4.3	Auro-Settings Application.....	35
4.3.1	Solo Mode	35
4.3.2	DAW	35
4.3.3	Hardware	36
4.3.4	Fader Link.....	37
4.3.5	Restart Service.....	37

Chapter 1: Using Auro-Matic Pro

This is a step by step guide on setting up a DAW-session with Auro-Matic Pro 2D and Auro-Matic Pro 3D. It covers upmixing mono, stereo, 5.1 surround, and 7.1 surround sound sources to a sound field of a higher dimension. The DAW used here is Pro Tools, but the workflow is the same in any DAW.

Before launching your DAW to use Auro-Matic Pro 2D or 3D see “Using Fader Link” on page 16D, you need to set the correct **DAW** and **Hardware** setting in the Auro-Settings menu bar application.

1.1 Configuring Auro-Settings

1. Go to **Auro-Settings** > **DAW** and select the DAW you use.

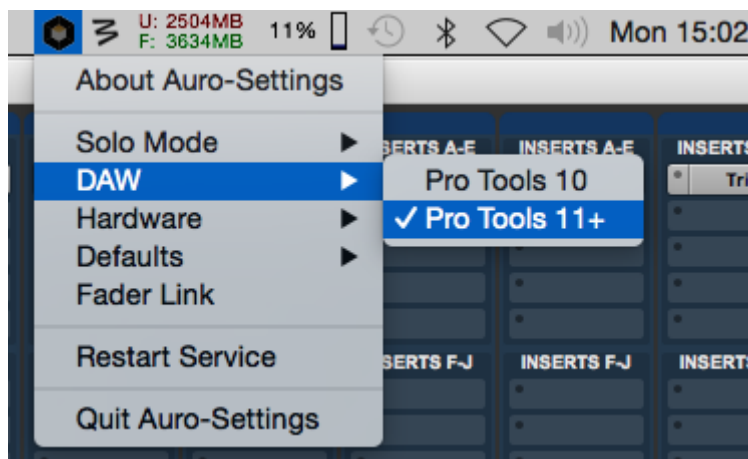


Figure 4-1 Selecting your DAW

2. Go to **Auro-Settings** > **Hardware** and select the type of hardware used with the DAW.
 - **Native:** Select this option if you are using a Pro Tools Native or HD Native system.
 - **HDX High Latency:** Select this setting if you are using an HDX System with a H/W buffer size of 1024 samples.
 - **HDX Low Latency:** Select this setting if you are using an HDX System with a H/W buffer size lower than 1024 samples.



INFO: Please note that only H/W buffer sizes of **256, 512 or 1024** samples are supported when working with the Auro-3D Authoring Tools.



ATTENTION: *If you are using a H/W buffer size lower than 1024 samples, and therefore have selected the **HDX Low Latency** setting, a DSP plug-in must be inserted on the first Insert slot of every track that contains an Auro-3D plug-in.*



TIP: *Inserting a (multi)-mono DSP version of the Trim plug-in reduces the DSP-overhead to a minimum and leaves the audio unaffected if the initial settings remain unchanged.*

For more information about the **Hardware** setting, please refer to "Hardware" on page 36.

1.2 Configuring a DAW Session

For this example, Pro Tools HD 11 will be used as DAW.

1.2.1 Configuring Playback Engine... and I/O...

1. Go to **Pro Tools > Setup > Playback Engine...** and select a **H/W Buffer Size** corresponding to your **Hardware** setting in Auro-Settings.
2. Go to **Pro Tools > Setup > I/O... > Output** and create two 5.1 output paths.
3. Name the first 5.1 output path **Lower**, and the second one **Height**.



INFO: *The **Lower** and **Height** output paths make up the Auro 11.1 monitoring setup.*

4. Go to **Pro Tools > Setup > I/O... > Bus**, create a 7.1 bus, and name it **Mix Engine**.



TIP: *Make sure you enable the **Auto-create sub paths** option when creating the **Mix Engine** bus.*



Figure 4-2 Auto-create sub paths

5. Still in the **Bus** tab, create a mono bus, name it **Scrubbing**, and map it bus to the Center-channel output.

1.3 Auro-Matic Pro 2D

Auro-Matic Pro 2D can function as a stand-alone plug-in that upmixes mono and stereo sound sources to a 5.1 surround sound field. If the Auro-3D Authoring Tools are installed, Auro-Matic Pro 2D can also connect to the Auro-Mix Engine to use the upmixed sound source directly in an Auro-3D mix.

1.3.1 Stand-alone Mode

To upmix a stereo song to a 5.1 surround configuration:

1. Create a stereo audio track in Pro Tools and import the song to that track.
2. Rename the audio track to an appropriate name, e.g. **Sugar Plum Fairy**.
3. On the stereo track, insert an instance of Auro-Matic Pro 2D (stereo/5.1).

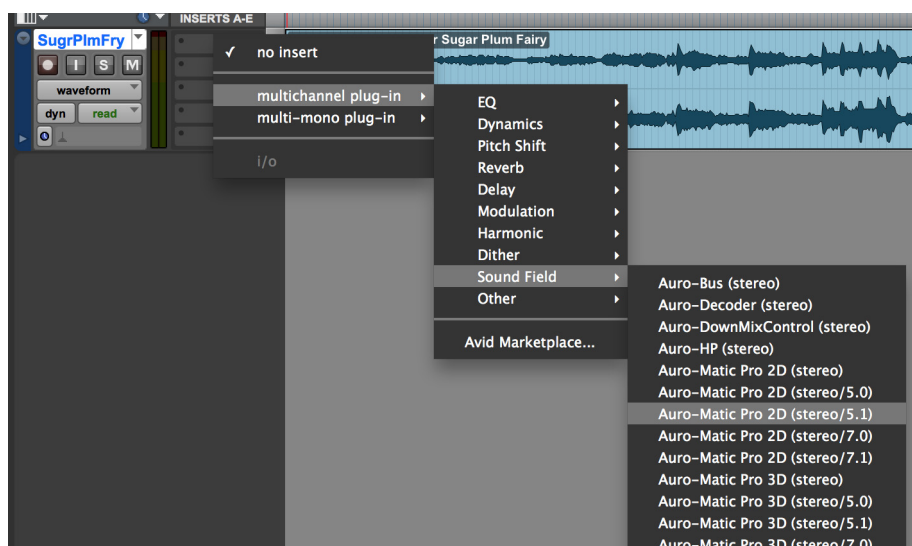


Figure 4-3 Inserting Auro-Matic Pro 2D (stereo/5.1)

4. Pro Tools automatically changes the track output configuration to 5.1 surround. If the audio track already had an output assigned, you will be prompted with the following message:

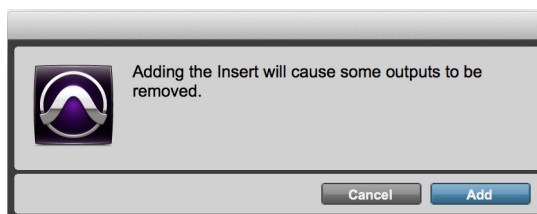


Figure 4-4 Changing the track output configuration removes the outputs.

5. Click **Add**.
6. Still on the audio track, select the **Lower** output path as output of the track to monitor the upmixed sound source through.

7. Open the plug-in user interface.
8. Change the name of the Auro-Matic Pro 2D instance to something more recognizable, like **Sugar Plum Fairy**.
9. Start playback and adjust the controls to your liking.

Following these steps, you should now hear the stereo song upmixed to 5.1 surround.

1.3.2 In combination with the Auro-3D Authoring Tools

To upmix a mono sound effect to 5.1 surround and use the output in an Auro-3D mix:

1. Create a mono audio track in Pro Tools and import the sound effect to that track.
2. Rename the audio track to an appropriate name, e.g. **Lightsaber**.
3. On the audio track, insert Auro-Matic Pro 2D (mono/5.1). Pro Tools automatically changes the track output configuration to 5.1 surround. If the audio track already had an output assigned, you will be prompted with the following message:

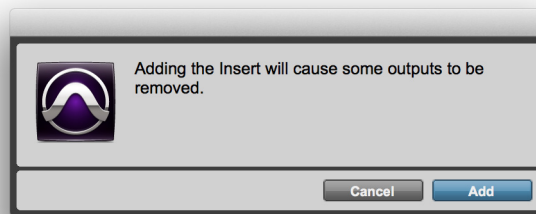


Figure 4-5 Changing the track output configuration removes the outputs.

4. Click **Add**.
5. Open the plug-in user interface.
6. Change the name of the Auro-Matic Pro 2D instance to something more recognizable, like **Lightsaber**.

Instead of directly listening to the 5.1 track output, we will connect this instance of Auro-Matic Pro 2D to an Auro-Mix Engine via an Auro-Bus plug-in, while the audio track output will be routed to the **Mix Engine** bus:

7. On the audio track, select the **Mix Engine** bus as output
8. Create a mono audio track in Pro Tools, and name it **FX**.
9. On the **FX** track, insert an Auro-Bus plug-in and name it **FX** as well.
10. Open the plug-in user interface of the Auro-Matic Pro 2D plug-in previously created.

11. Below the **Volume** fader, select **FX** from the bus assignment menu.

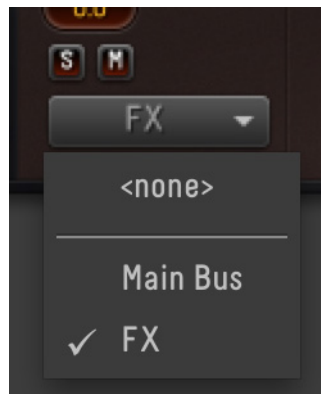


Figure 4-6 Assigning Auro-Matic Pro to an Auro-Bus

12. In the **FX** bus, **Lightsaber** appears in the **Tracks** field.

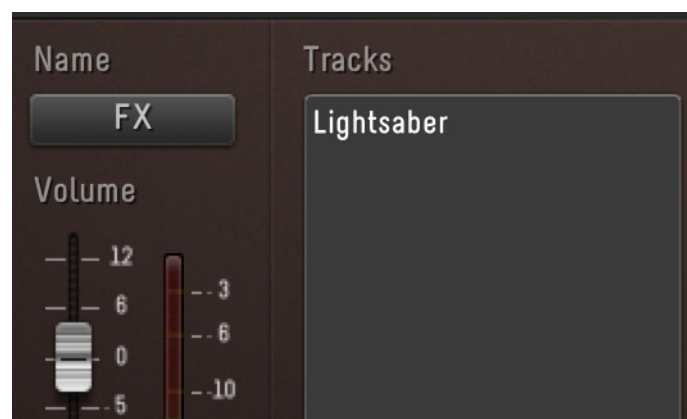


Figure 4-7 The Tracks field in the FX bus

The output of this Auro-Matic Pro 2D instance gets sent to the **FX** bus now. Next you need to create an Auro-Mix Engine that receives the **FX** bus:

13. Create a 7.1 aux input track in Pro Tools, and name it **Mix**.
14. On the aux input track, insert an Auro-Mix Engine plug-in and name it **Mix** as well.
15. In the plug-in user interface, select a compatible channel-based configuration, e.g. Auro 11.1. It is one of the compatible configurations because it has a 5.1 surround channel-layer in the bottom, just like the output configuration of the Auro-Matic Pro 2D instance.
16. Select **FX** from the **Buses** field.



Figure 4-8 Selecting the FX bus in Auro-Mix Engine

In the Auro-Mix Engine, the output of the Auro-Matic Pro 2D instance is mixed together with the output of other Auro-Matic Pro and Auro-Panner plug-ins that connect to it through their respective Auro-Buses.

To be able to monitor the output of the Auro-Mix Engine, the channels need to be delivered back to the DAW:

17. Create one 5.1 aux input track for the lower channels and one 5.1 aux input track for the height channels.
18. Rename the tracks to **Lower** and **Height**, respectively.
19. On the audio tracks, insert an Auro-Return plug-in and rename the plug-ins corresponding to the respective track names.
20. In both Auro-Return instances, select **Mix** from the **Bus** menu so that the Auro-Return plug-ins receive the output channels of the Auro-Mix Engine called **Mix**.



ATTENTION: *The Auro-Mix Engine outputs a Mix and a Downmix at the same time. To monitor the Downmix, select it from the Auro-Return Output menu.*

21. In both Auro-Return instances, select the desired channel order from the **1 ... N** dropdown menu's. Instead of selecting them one by one, you can choose a preset from the **Preset** dropdown menu as well.
22. For monitoring, select the **Lower** and **Height** output paths as the respective output of both tracks.
23. Open the Auro-Matic Pro 2D instance.
24. Start playback and adjust the controls to your liking.

Following these steps, you should now hear the mono sound effect upmixed to 5.1 surround, along with other sources you connect to the Auro-Mix Engine.

1.4 Auro-Matic Pro 3D

Auro-Matic Pro 3D can function as a stand-alone plug-in (without an Auro-Mix Engine) that upmixes mono, stereo, 5.1 surround, and 7.1 surround sound sources to a three-dimensional sound field. If the Auro-3D Authoring Tools are installed, Auro-Matic Pro 3D can also be connected to the Auro-Mix Engine to use the upmixed sound source directly in an Auro-3D mix.

1.4.1 Stand-alone Mode

To upmix a 5.1 soundtrack to an Auro 11.1 configuration:

1. Create a 5.1 audio track in Pro Tools and import the soundtrack to that track.
2. Rename the audio track to an appropriate name, e.g. **Moonlight Sonata**.
3. On the 5.1 track, insert an instance of Auro-Matic Pro 3D (5.1).
4. Change the name of the Auro-Matic Pro 3D instance to something more recognizable, like **Moonlight Sonata**.
5. Set the **Configuration** to **Auro 11.1**.

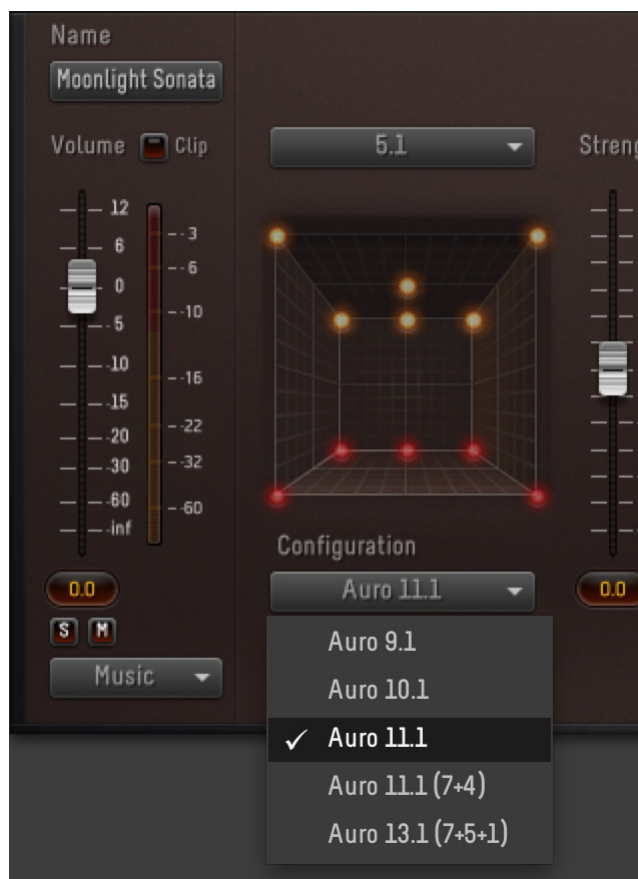


Figure 4-9 Selecting the Configuration

The Auro 11.1 configuration has more channels than a single audio track can handle in most DAW's. Therefore, the output channels of the Auro-Matic Pro 3D instance are delivered back to the DAW with two Auro-Return plug-ins, each on a separate track:

6. Create two 5.1 aux input tracks, one for the lower channels and one for the height channels.
7. Rename the tracks to **Lower** and **Height**, respectively.
8. On the aux input tracks, insert an Auro-Return plug-in and rename the plug-ins corresponding to the respective track names.
9. In both Auro-Return instances, select **Moonlight Sonata** from the **Bus** menu so that the Auro-Return plug-ins receive the output channels of the Auro-Matic Pro 3D instance called **Moonlight Sonata**.
10. In both Auro-Return instances, select the desired channel order from the **1 ... N** dropdown menu's. Instead of selecting them one by one, you can choose a preset from the **Preset** dropdown menu as well.



Figure 4-10 Two Auro>Returns deliver the output channels from Auro-Matic Pro 3D to the DAW.

11. For monitoring, select the **Lower** and **Height** output paths as the respective output of both tracks.
12. Open the Auro-Matic Pro 3D instance.
13. Start playback and adjust the controls to your liking.

Following these steps, you should now hear the 5.1 soundtrack upmixed to Auro 11.1.

1.4.2 In combination with the Auro-3D Authoring Tools

To upmix a 7.1 ambience sound source to Auro 13.1 and use the output in an Auro-3D mix:

1. Create a 7.1 audio track in Pro Tools and import the ambience source file to that track.
2. Rename the audio track to an appropriate name, e.g. **Ambience**.
3. On the audio track, insert Auro-Matic Pro 3D (7.1).
4. Open the plug-in user interface.
5. Change the name of the Auro-Matic Pro 3D instance to something more recognizable, like **Ambience**.
6. Change the **Configuration** to **Auro 13.1**

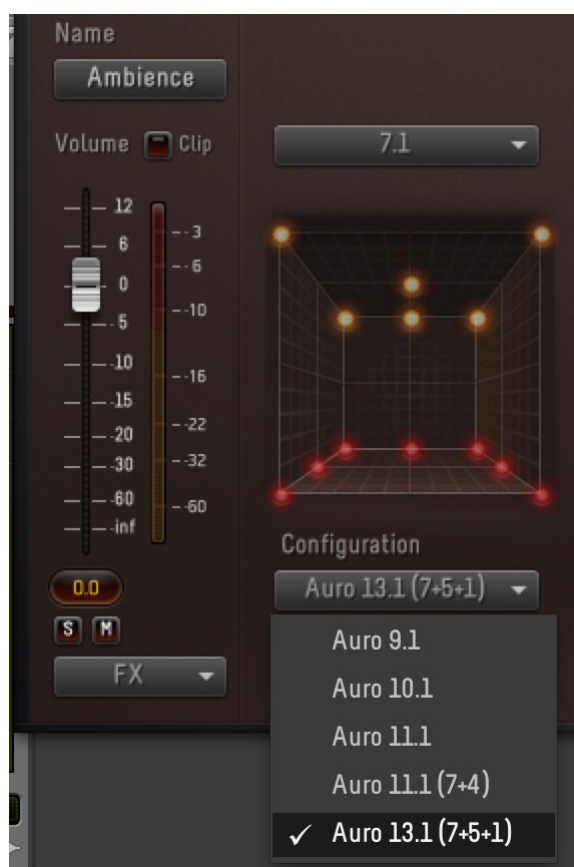


Figure 4-11 Selecting the Configuration

Next you need to connect this instance of Auro-Matic Pro 3D to an Auro-Mix Engine via an Auro-Bus plug-in, while the audio track output will be routed to the **Mix Engine** bus:

7. On the audio track, select the **Mix Engine** bus as output.
8. Create a mono audio track in Pro Tools, and name it **FX**.
9. On the **FX** track, insert an Auro-Bus plug-in and name it **FX** as well.
10. Open the plug-in user interface of the Auro-Matic Pro 3D plug-in previously created.

11. Below the **Volume** fader, select **FX** from the bus assignment menu.

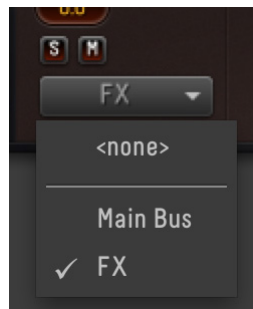


Figure 4-12 Assigning Auro-Matic Pro to an Auro-Bus

12. In the **FX** bus, **Ambience** appears in the **Tracks** field.

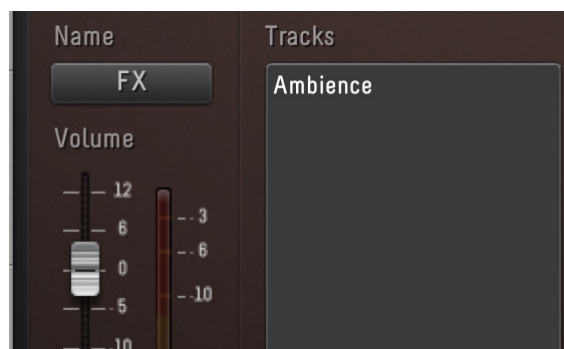


Figure 4-13 The Tracks field in the FX bus

The output of this Auro-Matic Pro 3D instance gets sent to the **FX** bus now. Next you need to create an Auro-Mix Engine that receives the **FX** bus:

13. Create a 7.1 aux input track in Pro Tools, and name it **Mix**.
14. On the aux input track, insert an Auro-Mix Engine plug-in and name it **Mix** as well.
15. In the plug-in user interface, select a compatible channel-based configuration, e.g. Auro 13.1. It is the only real compatible configuration because we are upmixing to Auro 13.1 with the Auro-Matic Pro 3D instance.
16. Select **FX** from the **Buses** field.



Figure 4-14 Selecting the FX bus in Auro-Mix Engine

In the Auro-Mix Engine, the output of the Auro-Matic Pro 3D instance is mixed together with the output of other Auro-Matic Pro and Auro-Panner plug-ins that connect to it through their respective Auro-Buses.

To be able to monitor the output of the Auro-Mix Engine, the channels need to be delivered back to the DAW:

17. Create one 7.1 aux input track for the lower channels and one 5.1 aux input track for the height channels.
18. Rename the tracks to **Lower** and **Height**, respectively.



INFO: *For step 18, the **Lower** bus needs to be modified from a 5.1 to a 7.1 bus.*

19. On the audio tracks, insert an Auro-Return plug-in and rename the plug-ins corresponding to the respective track names.
20. In both Auro-Return instances, select **Mix** from the **Bus** menu so that the Auro-Return plug-ins receive the output channels of the Auro-Mix Engine instance called **Mix**.

ATTENTION: *The Auro-Mix Engine outputs a Mix and a Downmix at the same time. To monitor the Downmix, select it from the Auro-Return Output menu.*

21. In both Auro-Return instances, select the desired channel order from the **1 ... N** dropdown menu's. Instead of selecting them one by one, you can choose a preset from the **Preset** dropdown menu as well.



Figure 4-15 Selecting which channels Auro-Return delivers to the DAW

22. For monitoring, select the **Lower** and **Height** output paths as the respective output of both tracks.
23. Open the Auro-Matic Pro 3D instance.
24. Start playback and adjust the controls to your liking.

Following these steps, you should now hear the 7.1 ambience sound source, upmixed to Auro 13.1, along with other sources you send to the Auro-Mix Engine.

1.5 Using Fader Link

The Fader Link feature allows the Pro Tools fader, solo and mute buttons to control the Auro-Matic Pro plug-in fader, solo and mute buttons.



ATTENTION: *The Fader Link feature for Auro-Matic Pro is only available when used in conjunction with the Auro-3D Authoring Tools.*

For more information about setting up Auro-Matic Pro to use the Fader Link feature, please refer to “Chapter 3: Using Fader Link” in the *Auro-3D Authoring Tools User Guide*.



Auro Technologies

Auro-Matic Pro - Reference Manual

Plug-in Version: 2.2.0

User Guide Version: 2.2.0

Auro Technologies NV

Kievitstraat 42

B-2400 Mol

Belgium

Phone: +32 14 31 43 43

Email: info@auro-technologies.com

Support: support@auro-technologies.com

Web: www.auro-technologies.com

Chapter 1: Introduction to Auro-3D

Welcome to Auro-3D®, the next step in sound evolution brought to you by Auro Technologies. Audio reproduction has evolved from a point source (mono), to a single dimension (stereo), to two-dimensional surround sound (5.1 or 7.1). To produce true three-dimensional sound, a reproduction system must include a vertical Z axis (top-to-bottom), in addition to the existing X (side-to-side) and Y (front-to-back) planar axes found in current systems. Auro-3D's three-layered approach (Lower, Height, and Top Layers) completes this evolution by creating a realistic three-dimensional soundscape.

Auro-3D films can still be shown in theatres without an Auro-3D decoding system by storing the Auro-3D content in a surround sound (5.1 or 7.1) carrier and playing back the 5.1 or 7.1 surround sound standard without any loss of audio quality. Theatres with an Auro-3D system decode and play back the Auro-3D format while ignoring the 5.1- or 7.1-channel version.

Auro-3D Formats

The Auro 9.1–11.1 formats are based on and compatible with the 5.1 surround standard. They include the following additional channels:

- **Auro 9.1:** 5.1 surround + four Height Channels (one above each corner channel)
- **Auro 10.1:** Auro 9.1 + Top Channel (aka *Voice of God*)
- **Auro 11.1:** Auro 10.1 + Height Center Channel

The Auro 11.1b and 13.1 formats are based on and compatible with the 7.1 surround standard. They include the following additional channels:

- **Auro 11.1b:** 7.1 surround + four Height Channels (one above each corner channel)
- **Auro 13.1:** Auro 11.1b + Height Center Channel + Top Channel

Auro Technologies has developed the **Auro-3D Authoring Tools** to allow three-dimensional panning and **Auro-Matic Pro 2D and 3D** to allow two- and three-dimensional upmixing in any DAW on Mac that supports AAX plug-ins.

Auro-Matic Pro

Auro-Matic Pro is an upmixing plug-in based on an intelligent and highly efficient algorithm which uses a variety of early reflection patterns to create a two-dimensional sound field from a one-dimensional source, or a three-dimensional sound field from a one- or two-dimensional source, all without affecting the intentional aesthetics of the original mix. There are two available versions of the plug-in:

- **Auro-Matic Pro 2D** can create a surround 5.1 sound field from mono and stereo sources. It acts as a stand-alone plug-in that outputs directly to a DAW-track but can also be used in combination with the Auro-3D Authoring Tools.
- **Auro-Matic Pro 3D** can create an Auro-3D sound field from mono, stereo, and surround 5.1 and 7.1 sources. This version needs to be connected to other plug-ins in the Auro-3D ecosystem to surmount the eight-channel format limitation of most DAW's.

Auro-Bus plug-in: The Auro-Bus collects multiple Auro-Matic Pro and Auro-Panner outputs to form a subgroup or a stem.

Auro-Mix Engine plug-in: The Auro-Mix Engine sets the Auro-3D configuration and controls how all connected Auro-Buses are mixed and encoded. It displays the level of all channels in the Auro-3D field and outputs a mix and downmix to the connected Auro-Return plug-ins. It also outputs a downmix to the DAW-track it is inserted on.

Auro-Return plug-in: The Auro-Return delivers the output channels of an Auro-Mix Engine or an Auro-Matic Pro 3D to the DAW. Because most DAW's have an eight-channel format limitation, the Height and Lower layers are typically delivered to two separate multichannel tracks, each with its own Auro-Return instance.

ATTENTION: *The Auro-Panner, Auro-Bus and Auro-Mix Engine plug-ins are part of the Auro-3D Authoring Tools and are not included in Auro-Matic Pro.*

A3DHost: A3DHost runs as a background service that ensures that all Auro-3D plug-ins are correctly connected to each other.

The **Auro-Settings application** (accessible through the Mac menu bar) enables you to select the Solo behavior for Auro-3D plug-ins, specify the hardware and software the Auro-3D Authoring Tools are used with, and activate the global Fader Link option.

ATTENTION: *We currently support AAX plug-ins for Avid's Pro Tools 10 and 11. Please contact Auro Technologies for information on when VST and AU versions will be available.*

This reference manual covers the following information:

Chapter 2: *System Requirements and Installation* – Lists system and DAW requirements and discusses how to install Auro-3D software.

Chapter 3: *Auro-Matic Pro Plug-ins* – Elaborates on the Auro-Matic Pro and the other Auro-3D plug-in parameters.

Chapter 2: System Requirements and Installation

2.1 System Requirements and Compatibility

Auro-Matic Pro exists in AAX format and run on the following:

- **Operating Systems:** Mac OS X 10.8.5, 10.9.5 and 10.10.5
- **DAW's:** Pro Tools 10, 11 and 12



TIP: *Only the latest update of your DAW is supported.*

- **Hardware:** Pro Tools|HDX and Pro Tools|HD Native

Please refer to complete system requirements and a list of qualified computers, operating systems, hard drives, and third-party devices for Avid's Pro Tools by visiting:

www.avid.com/compatibility

ATTENTION: *Auro-Matic Pro supports sample rates of 44.1 and 48 kHz. A future release will support higher sample rates.*

2.2 Installation

After purchasing the software, download the latest software using the provided download link.

If the download link has expired, contact support for a new one:

support@auro-technologies.com

To install Auro-Matic Pro on a Mac running OS X:

1. Uninstall any previous installation of Auro-Matic Pro, by double-clicking **AuroMaticPro.Uninstall.command** from:
/Library/Application Support/Auro Technologies/
2. Restart your computer.
3. Double-click the ZIP file you downloaded from the Auro Technologies website, then double-click **Auro-Matic Pro 2D.pkg** or **Auro-Matic Pro 3D.pkg** to begin the standard installation.
4. Follow installation instructions.

5. Finally, restart your computer.

ATTENTION: *Restarting your computer in step 2 and 5 is mandatory for a correct installation.*

Auro-Matic Pro 2D.pkg only installs the Auro-Matic Pro 2D plug-in.

Auro-Matic Pro 3D.pkg installs the following software:

- Auro-Matic Pro 2D and Auro-Matic Pro 3D plug-ins
- Auro-Return plug-in
- A3DHost service
- Auro-Settings menu bar application

2.2.1 Licensing

To use Auro-Matic Pro, it is required to install the correct license(s) on a 2nd generation iLok USB key. There are two license levels:

- **Auro-Matic Pro 2D** – Includes 2D upmixing functionality.
- **Auro-Matic Pro 3D** – Extends the Auro-Matic Pro 2D license with 3D upmixing functionality.

For more information about iLok, visit:

www.ilok.com

Chapter 3: Auro-Matic Pro Plug-ins

Auro-Matic Pro is used as an insert plug-in on an audio track.

- Auro-Matic Pro 2D can be inserted on a mono or stereo track and outputs a 5.1 sound field to the DAW-track it is inserted on.
- Auro-Matic Pro 3D can be inserted on a mono, stereo, 5.1, or 7.1 audio track. It can connect to an Auro-Mix Engine via an Auro-Bus or can be routed directly to Auro-Return plug-ins.

3.1 Auro-Matic Pro



Figure 3-1 Auro-Matic Pro 3D

3.1.1 Connection

The **Connection** LED indicates the connection state of the Auro-Matic Pro plug-in. If the LED blinks red, there is a connectivity problem (see "Restart Service" on page 37 for help). If it lights yellow, the plug-in is ready to use.

3.1.2 Fader Link LED

The **Fader Link** LED indicates the current state of the **Fader Link** option in Auro-Settings (see “*Using Fader Link*” on page 16 for help). If the LED lights blue, **Fader Link** is active. Otherwise it is inactive.

3.1.3 High Latency Mode LED

The **High Latency Mode** LED lights red, when an Advanced Center algorithm is selected. For more information about the Center option, please refer to “*Center*” on page 29.

3.1.4 HDX Aux

On Pro Tools|HDX Systems, an Auro-Matic Pro instance inserted on an Aux Input track requires enabling the **HDX Aux** switch. This ensures correct delay compensation between Auro-Matic Pro and Auro-Panner instances inserted on regular audio tracks and those inserted on aux input track, before being mixed together in the Auro-Mix Engine.

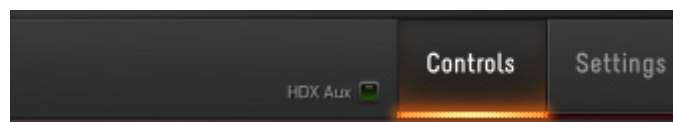


Figure 3-2 HDX Aux switch in Auro-Matic Pro

3.1.5 Name

This field initially displays a unique, automatically generated name. To rename an Auro-Matic Pro instance, click the **Name** field and type a new name.

ATTENTION: *Changing the name of the Auro-Matic Pro instance does not change the name of the respective DAW-track.*

3.1.6 Volume

The **Volume** fader sets the signal level sent to a connected Auro-Bus or Auro-Return instance, and affects Auro-Matic Pro’s direct output to the DAW-track.

The **Volume** can be set three ways:

- Click and drag the fader.
- Click in the path of the fader.
- Double-click the numerical field below the fader and enter a value.

Level Meter

This meter displays the DAW-track’s direct input level to the Auro-Matic Pro plug-in.

Clip

The **Clip** LED lights red if one sample exceeds a threshold of -0.1 dBFS on any of the input channels. Click the **Clip** LED to clear it.

Solo

The **S** switch lights yellow to indicate this instance is soloed, and all instances which aren't soloed nor designated *solo safe* are muted.

The **S** switch flashes yellow to indicate another Auro-Matic Pro or Auro-Panner instance is soloed.

- Click the **S** switch to toggle the solo status of this Auro-Matic Pro instance only.
- Alt + click the **S** switch to unsolo all soloed Auro-Matic Pro and Auro-Panner instances.
- Command + click the **S** switch to designate this Auro-Matic Pro instance *solo safe*: When other Auro-Matic Pro or Auro-Panner instances are soloed, this Auro-Matic Pro instance will remain audible.

ATTENTION: *The Solo behavior can be set to X-OR or Latch in the Auro-Settings application (see "Solo Mode" on page 35).*

Mute

The **M** switch lights red to indicate this instance is muted. Multiple instances can be muted at the same time.

- Click the **M** switch to toggle the mute status for this instance only.
- Alt + click the **M** switch to unmute all muted Auro-Matic Pro and Auro-Panner instances.

Volume Link

The **Volume Link** button links the Volume fader of an Auro-Matic Pro instance to the Volume fader of the Pro Tools track it's inserted on. The level of the Auro-Matic Pro instance can then be controlled by adjusting the corresponding Pro Tools track's fader, either from the software or from a control surface.



Figure 3-3 Volume Link button

Deactivating the **Volume Link** button will unlink the Volume fader of this Auro-Matic Pro instance from the Volume fader of the hosting Pro Tools track, in which case the level of the Auro-Matic Pro instance is purely controlled from the plug-in.

3.1.7 Bus Assignment

The bus assignment menu, located below Solo and Mute, lets you send the processed output of this Auro-Matic Pro plug-in to the Main Bus or an Auro-Bus plug-in. This bus can then be selected in an Auro-Mix Engine. The currently selected bus name is displayed in the menu.

ATTENTION: *By default, all Auro-Matic Pro instances connect to the Main Bus, which is available even when no Auro-Bus plug-ins are inserted.*

3.1.8 Input Source

The **Input Source** field displays the input source format to this Auro-Matic Pro plug-in. If the instance has been inserted on a mono, stereo or 5.1 track, this field will display **mono**, **stereo** or **5.1** respectively.

3.1.9 Configuration

The Configuration field displays the output configuration of this instance of Auro-Matic Pro:

- In Auro-Matic Pro 2D, the output configuration is **5.1 Surround**.
- In Auro-Matic Pro 3D, the output configuration options are: **Auro 9.1**, **Auro 10.1**, **Auro 11.1**, and **Auro 13.1**.

ATTENTION: *For mono and stereo inputs, x.1 output configurations leave the LFE channel empty. The introduction of an LFE-generator is expected in an upcoming release.*

3.1.10 Ambience

The Ambience parameter sets the overall size and sonic characteristics of the virtual space. Two versions of each size are available: **Small**, **Medium**, **Large**, and **Open**.

3.1.11 Strength

The **Strength** fader sets the amount of generated signal in the upmix.

A low **Strength** value produces less signal in the upmixed channels, while a high **Strength** value produces more signal in the upmixed channels. In the latter case, the source channels are attenuated to maintain equal loudness.

3.1.12 Space

This parameter changes the strength of the added ambience.

3.1.13 Depth

These parameters affect how spatial information is sent to the additional Auro 3D channels.

3.1.14 Weight

Both **F/R** and **Height** determine where the weight of the upmixing effect lies. They influence directly how much of the generated spatial information is sent to Front/Rear and Height channels, respectively.

F/R

The **F/R** control adjusts the general balance between front and rear. Increasing the **F/R** control towards the rear gives the impression of sound emanating from behind the listening position and is useful for increasing the effect of surround channels in ambience processing.

Height

The **Height** control adjusts the general balance between lower layer (regular 5.1 or 7.1 layer) and height layer (height and top channels).

3.1.15 Center

The **Center** parameters determine how the Center channel is generated if the format of the input source is stereo. The **Center** menu has the following options: **Bypass**, **Classic**, **Standard**, **Advanced Music**, **Advanced Medium**, and **Advanced Dialog**.

ATTENTION: *In Bypass, Classic, and Standard modes, the Center generating algorithm doesn't induce latency. When using Advanced Music, Medium, and Dialog modes, the algorithm has a latency of 4095 samples.*

Level

The **Level** knob sets the output level of the of the Center channel, whether it is a generated or native center channel.

Divergence

The **Divergence** knob allows you to divert the generated Center signal to the other generated channels.

ATTENTION: *The Divergence setting is only available for Advanced Center Algorithms.*

3.1.16 Equalizer

The **Equalizer** section can be used to fine-tune the spectral quality of the upmixed channels. It can be toggled on and off by clicking the toggle button.

Bass

The **Bass** control sets the low-frequency gain that is applied to the upmixed channels, ranging from -6 dB to +6 dB.

Treble

The **Treble** control sets the high-frequency gain that is applied to the upmixed channels, ranging from -6 dB to +6 dB.

ATTENTION: *Strength, Space, Depth, Weight, and EQ only affect the generated output channels.*

3.1.17 Controls and Settings Tabs

Click the **Controls** tab to access the plug-in's main controls.

Click the **Settings** tab to access **Routing** and **Knob Mode** settings.

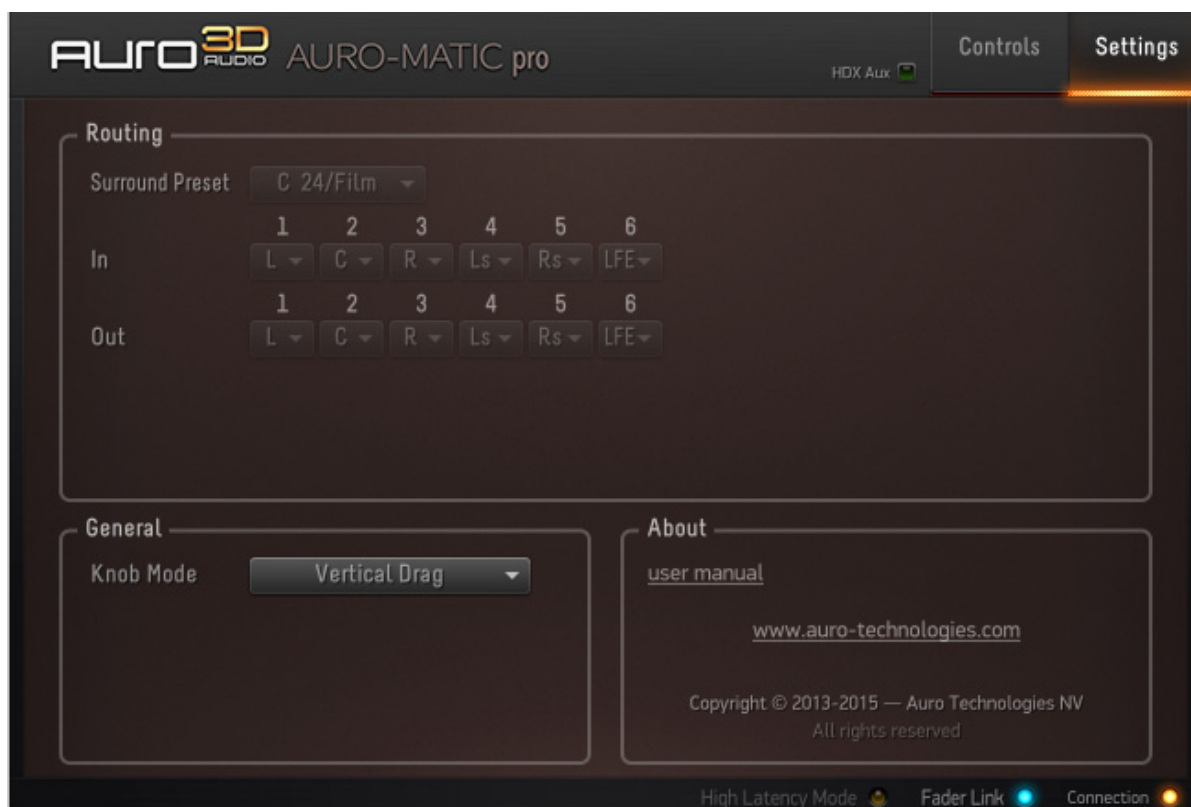


Figure 3-4 Auro-Matic Pro Settings

Routing

The routing panel can be used to change the routing of:

- input channels to Auro-Matic Pro
- output channels from Auro-Matic Pro

ATTENTION: *This feature is inactive for the AAX version of Auro-Matic Pro, which uses Pro Tools' default channel ordering.*

General

The **Knob Mode** menu determines how the knobs are adjusted:

- **Rotary:** Click the knob and drag counterclockwise to decrease and clockwise to increase the value.
- **Horizontal Drag:** Click the knob and drag left to decrease and right to increase the value.
- **Vertical Drag:** Click the knob and drag down to decrease and up to increase the value.

About

Click the **user manual** link to view this guide as a PDF.

Click the www.auro-technologies.com weblink to visit our website.

3.2 Auro-Return

The Auro-Return plug-in routes channels from an Auro-Mix Engine or Auro-Matic Pro to the DAW-track it is inserted on.



Figure 3-5 Auro-Return plug-in

3.2.1 Connection

The **Connection** LED indicates the connection state of this Auro-Return instance. If the LED blinks red, there is a connectivity problem (see "Restart Service" on page 37 for help). If it lights yellow, the plug-in is ready to use.

3.2.2 Name

The **Name** field initially displays a unique, automatically generated name. We recommend assigning a more meaningful name to each Auro-Return instance, such as the channel layer it routes back to the DAW.

To rename an Auro-Return instance, click the **Name** field and type a new name.

ATTENTION: *Changing the name of the Auro-Return instance does not change the name of the respective DAW-track.*

3.2.3 Bus

This menu lets you select the Auro-Mix Engine or Auro-Matic Pro plug-in from which to receive the audio channels.

3.2.4 Stem

This menu lets you select all stems or a single stem (i.e. an Auro-Bus).

3.2.5 Output

This menu lets you choose between the regular mix or downmix.

3.2.6 Preset

This menu lets you select a channel configuration that best suits your application. Film and ITU conventions are both available for Lower and Height channels.

The options in this menu depend on the following:

- The **Configuration** selected in the Auro-Mix Engine connected to this Auro-Return plug-in (see page 23).
- - and -
- Whether **Mix** or **Downmix** is selected in the **Output** menu.

3.2.7 1...N

The 1...N channel menu's are initially populated by the selected preset, but can be individually set to create a custom format. The **Preset** menu displays **Custom** to indicate a modified preset.

Select from these menus to reassign the Auro-Mix Engine channels routed to this Auro-Return plug-in's output channels.

ATTENTION: *To assign an incremental range of channels, hold down Alt and select an output.*

3.3 Auro-Settings Application

Auro-Settings runs as a menu bar application. It provides easy access to **Solo Mode**, **DAW** and **Hardware** settings, and can restart the A3DHost (**Restart Service**) if necessary.

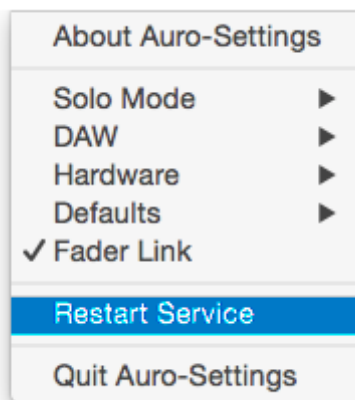


Figure 3-6 Auro-Settings options in the Finder menu bar

3.3.1 Solo Mode

There are two **Solo Mode** options:

- **X-OR**: Each solo selection replaces the previous selection(s).
- **Latch**: Each solo selection adds to the previous selection(s).



ATTENTION: *When using the Auro-Matic Pro plug-in in combination with the Auro-3D Authoring Tools, all Auro-Panner and Auro-Matic Pro instances belong to the same Solo and Mute group. Enabling Solo in an Auro-Matic Pro instance will therefore disable Solo in an Auro-Panner instance if the X-OR Solo Mode is enabled.*

3.3.2 DAW

Before launching your DAW, select which DAW you are using. There are two options:

- **Pro Tools 10**: Choose this option to use the Auro-3D Authoring Tools in Pro Tools 10.
- **Pro Tools 11+**: Choose this option to use the Auro-3D Authoring Tools in Pro Tools 11 or 12.



ATTENTION: *If an incorrect DAW is selected, the Connection LED blinks red, indicating that the plug-in will not function correctly.*

3.3.3 Hardware

To apply correct delay compensation, you need to select the hardware you are using:

- **Native:** Select this option if you are using a Native or HD Native system.
- **HDX High Latency:** Select this setting if you are using an HDX System with a H/W buffer size of 1024 samples.
- **HDX Low Latency:** Select this setting if you are using an HDX System with a H/W buffer size lower than 1024 samples.

Pro Tools 11 (or higher) and its Low- and High-Latency Hardware Buffer

Pro Tools 11 HD introduced different hardware buffers, namely a low-latency buffer and a high-latency buffer. The high-latency buffer has a fixed value depending on the session sample rate (1024 samples for 48 kHz, 2048 samples for 96 kHz) and is used to play back tracks without sacrificing plug-in performance. The low-latency buffer is set to a user-defined value of **64, 128, 256, 512, or 1024** samples (in **Setup > Playback Engine > H/W Buffer Size**). This low-latency buffer is automatically enabled by Pro Tools under specific conditions where low-latency monitoring is required, like:

- on an input monitor-enabled track
- on a record-enabled track
- on a track which has a DSP plug-in inserted on it
- on an aux input track with both an active input and output



INFO: *Please note that only the following hardware buffer sizes are supported: **256, 512 or 1024** when Fader Link is enabled.*



ATTENTION: *Auro-Matic Pro and the Auro-3D Authoring Tools currently don't support the use of multiple buffer sizes simultaneously, and are therefore restricted to work in either the low-latency domain or the high-latency domain.*

To force the Auro-3D Authoring Tools to work in the low-latency domain only, a DSP plug-in needs to be inserted on the first Insert slot of every track that contains an Auro-3D plug-in. Working with the low-latency buffer also keeps the latency to a minimum.



TIP: *Inserting a (multi-)mono DSP version of the Trim plug-in reduces the DSP-overhead to a minimum and leaves the audio unaffected if the initial settings remain unchanged.*

3.3.4 Fader Link

The Fader Link feature allows the Pro Tools fader, solo and mute buttons to control the Auro-Panner (or Auro-Matic Pro) fader, solo and mute buttons. Additionally, X/Y panning can also be linked to the Pro Tools X/Y panning controls.

Click **Fader Link** to activate the Fader Link mode.

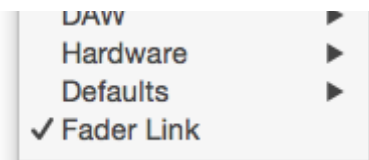


Figure 3-7 Active Fader Link mode

3.3.5 Restart Service

If the **Connection** LED in an Auro-Matic Pro or Auro-3D Authoring Tools plug-in blinks red, there is a connectivity problem with that plug-in instance. This can occur for the following reasons:

- The A3DHost service, which is responsible for establishing plug-in connections, was not installed properly, or the workstation was not restarted after installation.
- An incorrect **DAW** setting has been selected from the Auro-Settings application.
- The A3DHost service stopped for some reason and did not restart automatically. To restore your system, quit your DAW, select Restart Service from the Auro Settings application and restart your DAW. If the **Connection** LED still blinks red, restart your computer.



TIP: *The **Restart Service** command can also be found in /Library/Application Support/Auro Technologies/A3DHost (A3DHost.RestartService.command).*
